

CO DETECTOR (CARBON MONOXIDE)

DA-930-DR

USER MANUAL



CO Detector
England
Electro-chemical
Sensor technology



CO detectors may save your lives!

Great danger: Carboxyhemoglobin produces flu-like symptoms, for example: headaches, fatigue, nausea, dizzy spells, confusion, and irritability. Since symptoms are similar to the flu, carbon monoxide poisoning can be misdiagnosed. As levels of COHb rise, victims suffer vomiting, loss of consciousness, and eventually brain damage or death.

Application: Home, office, recreational vehicle or boat
Detector alarms you well before the harmful level is reached.

ACTIONS TO TAKE WHEN ALARM SOUNDING

In case of harmful levels of CO gas being detected, your detector will go into a continuous full alarm. Try to take the following necessary actions immediately:

(a) if there is any one experiencing the effects of carbon monoxide poisoning such as headache, dizziness, nausea or other flu-like symptoms, call your fire department right away or 911. You should evacuate all the people in the premises immediately. Do a head count to check that everybody is accounted for.

(b) Do not re-enter the premises until the problem has been corrected and the CO gas has been dispersed out and a safe level is reached.

(c) if no symptoms exist, immediately ventilate the home by Opening windows and doors. Turn off fuel burning appliances and call a qualified technician or your utility company to inspect and repair your problem before restarting appliances.

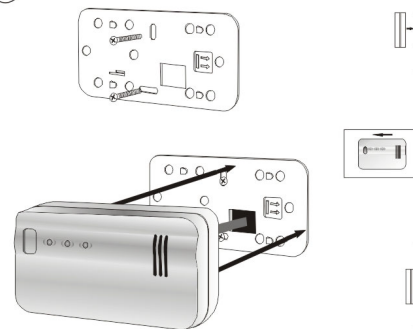
NOTE: You can switch off the acoustic alarm tone in the event of an alarm. The red LED will continue to flash, but short signal tone will beep approximately every 30 seconds, which is called silent mode. After 8 minutes, the detector will leave silent mode.

WARNING: Normally an activation of the detector indicates the presence of CO gas. However, the CO gas can be extremely fatal, if it is not detected. The source of the CO gas may come from several possible situations, please refer to the list of source of carbon monoxide in page 2.

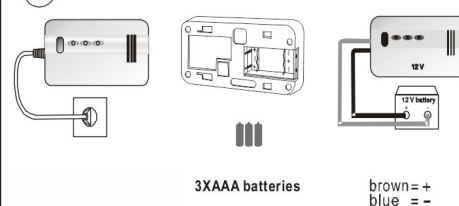
CAUTION: This detector will only indicate the presence of CO gas may be present in other areas in the premises.

2. Mounting

2a



2b

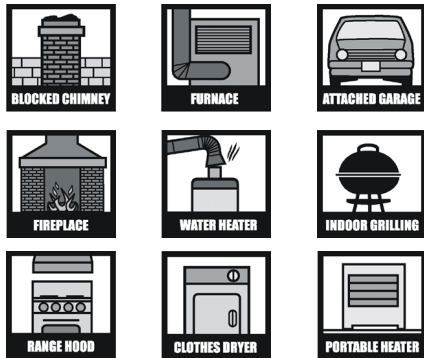


3XAAA batteries

brown = +
blue = -

(1) Mounting locations

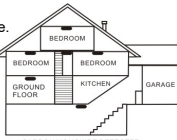
(1a)



Potential Sources of Carbon Monoxide in the Home

(1b) LOCATIONS TO INSTALL YOUR DETECTOR

Since CO gas moves freely in the air, the suggested location is in or as possible closed to sleeping areas of the home. The human body is most vulnerable to the effects of CO gas during sleeping hours. For maximum protection, a CO detector should be located outside primary sleeping areas or on each level of your home. The electro-chemical sensor detects carbon monoxide, measures the concentration and sounds a loud alarm before a potentially harmful level is reached.



Do not place the detector in the following areas:

- (a) Whether the temperature may drop below 40°F (4.4°C) or exceed 100°F (37.8°C)
- (b) Near paint thinner fumes
- (c) Within 5 feet (1.5 meter) of open flame appliances such as furnaces, stoves and fireplaces
- (d) In exhaust streams from gas engines, vents, flues or chimneys
- (e) Do not place in close proximity to an automobile exhaust pipe; this will damage the detector

Guarantee

The CO detector has been tested to comply with the applicable regulations and it has been manufactured with great care.

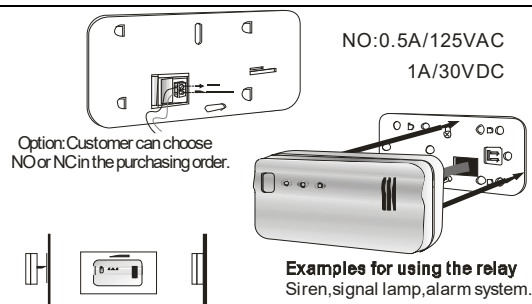
The guarantee runs for 1 year from purchase of the equipment by the end consumer. The guarantee can only be upheld if the unmodified equipment is returned together with the dated receipt, after it has been packed and adequately stamped. Please include a brief, written description of the defect with the equipment being complained about.

If the guarantee claim is authorized, then the manufacturer will choose either repair the equipment within reasonable period or to exchange it. If the guarantee claim is unjustified (e.g., made after expiry of the guarantee period, or the defect is not covered by the guarantee claim), then the manufacturer will try to repair the equipment economically.

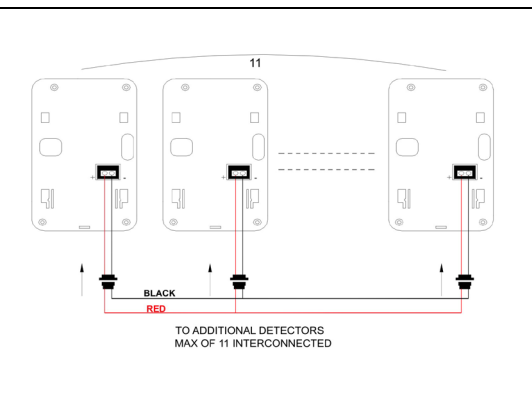
The guarantee liability does not refer to natural wear and tear, alteration by environmental influences or damage caused by transportation; nor to damage which has occurred as a result of noncompliance with the mounting instructions or improper installation.

The manufacturer is not liable for indirect or consequential damage, nor for damage to property.

(3.) Mounting for the relay function



(4.) Mounting for the interconnection



(5.) Specifications

Power supply	5W 3XAAA batteries DC12V
Dimensions	80mmX140mmX46mm
Operating temperature	-10°C to 49°C
LED light & buzzer:	
Power on	-Green LED remains on for AC power -Green LED flashes every 1 minute for battery power
Full Alarm	-Red LED flashes and 3 beeps, pause, 3 beeps, pause
Testing	-The three LED flash and 3 beeps, pause 3 beeps, pause
Malfunctioning	-Orange LED flashes and beeps, pause, beeps, pause
Manufactured in compliance with	CE/UL 2034 /EN 50291
Signal volume	85 dB at a distance of 3 m (10 feet)
Batteries life	Minimum 5 years at normal operation

Based on UL requirements UL 2034 Standard.

A full alarm is activated under the following conditions:

- between 60 and 90 minutes at exposures of 70 ppm
- between 10 and 30 minutes at exposures of 150 ppm
- between 4 and 10 minutes at exposures of 400 ppm

No warning under the following conditions:

- for 30 days at exposures of 30 ppm
- for 60 minutes at exposures of 70 ppm
- for 10 minutes at exposures of 150 ppm
- for 4 minutes at exposures of 400 ppm

Based on EN requirements EN 50291 standard.

A full alarm is activated under the following conditions:

- between 60 and 90 minutes at exposures of 50 ppm
- between 10 and 40 minutes at exposures of 100 ppm
- within 3 minutes at exposures of 300 ppm

No warning under the following conditions:

- for 120 minutes at exposures of 30 ppm
- for 60 minutes at exposures of 50 ppm
- for 10 minutes at exposures of 100 ppm

The right to make technical and visual modifications without announcement is reserved.